

CERTIFICATE OF LOCATION OF GOVERNMENT CORNER

EAST QUARTER _____ Corner of Section 11 , Township 108N , Range 39W

5th Principal Meridian, State of Minnesota, County of MURRAY

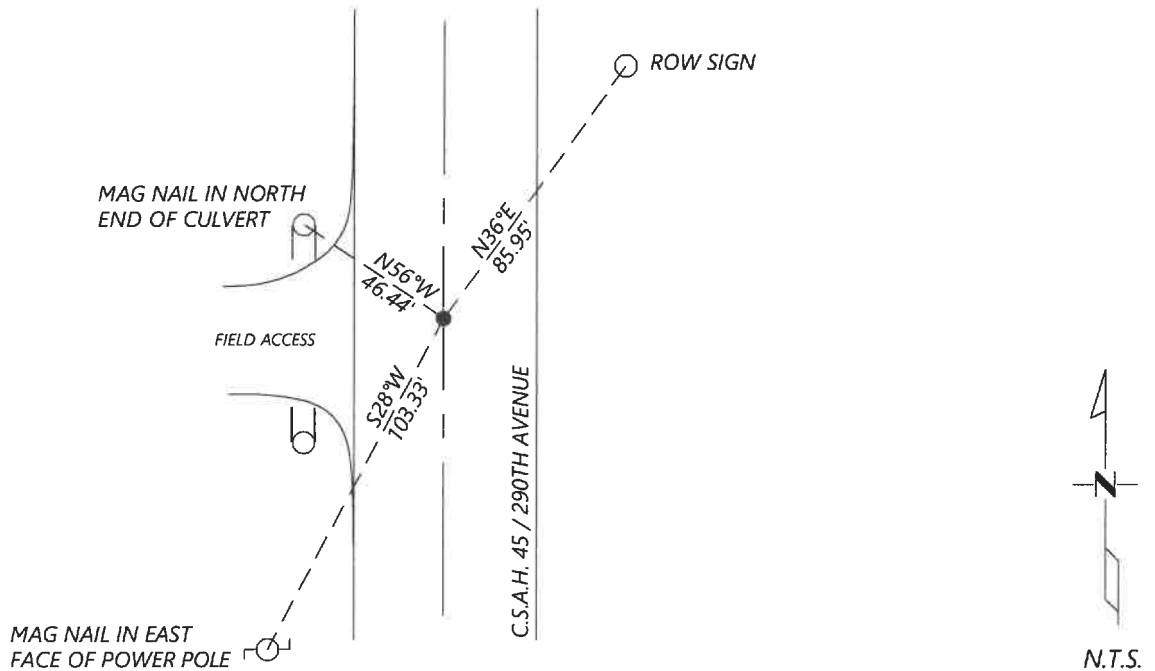
At the corner location shown on the sketch:

On 09/14/2020 found a NO. 4 REBAR FLUSH WITH ASPHALT
DATE

left monument as found lowered monument removed monument (explain)

On _____ placed a _____
DATE

SKETCH OF REFERENCE TIES



Statement of evidence for this corner location is on back of this page.

I hereby certify that this document was researched and prepared by me or under my direct supervision and that I am a licensed Land Surveyor under the laws of the State of Minnesota.

Signature [Handwritten Signature]

Date 6/17/2021 License No. 45874

Title:

- Land Surveyor Professional Engineer
 County Surveyor County Engineer

OFFICE OF THE COUNTY RECORDER

County of Murray

I hereby certify that this document was filed in the Co.

Recorder's office at _____ M. on the _____ day of _____ A.D. 20

County Recorder Karen Brown
 by JUN 22 2021, Deputy

DOCUMENT NO. _____

Statement of Evidence:

East Quarter Corner of Section 11, Township 108 North, Range 39 West, 5th Principal Meridian, Murray County, Minnesota.

1861 July, GLO Notes: Set post on mound.

Undated, Survey record for Section 12 does not show that the government corner was found. A distance of 2650.7ft is shown to the Northwest and Southwest corners.

1974 October, Survey record for Section 11 shows that a 2x2 hub was located and a steel pin was placed above it.

Nail & cap in post	W	50.14ft
Nail & cap in brace post	SW	50.58ft

2003 April, Road plans for CSAH 45 show the corner was assumed at PI station 287+30.60.

Coordinates: N: 219091.35 E: 574537.45

2020 September, Westwood Professional Services searched and found a No. 4 rebar flush in centerline of road. Coordinates fit the 2003 Road plans. I accepted it as the corner and set reference ties.

Analysis of the recovered data, field evidence and survey measurements, indicates that the monument found is the correct perpetuation of this corner. For additional information concerning this corner please contact Westwood Professional Services.